

Wi-Fi manual

Ewpe Smart App



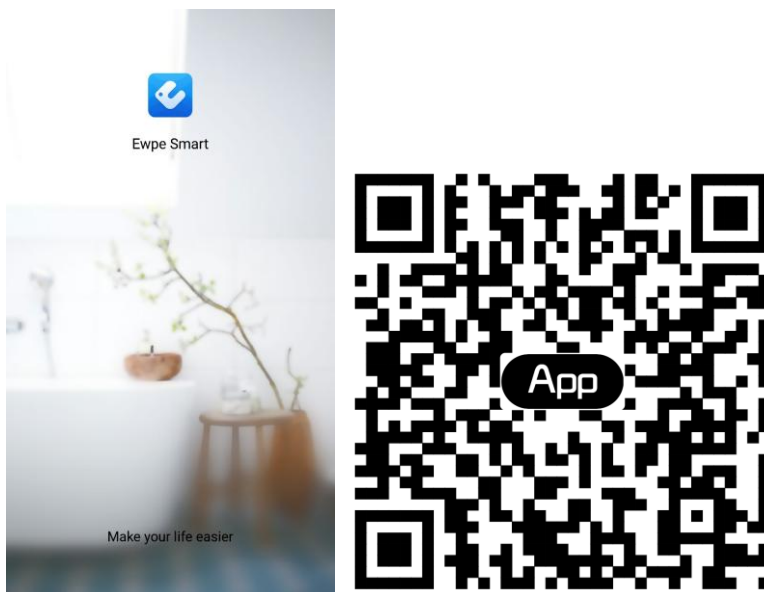
Intelligent Control

Notes:

- 1) Make sure the smart phone or tablet computer adopts standard Android or IOS operation system. For detailed version, please refer to the APP.
- 2) **Wi-Fi- network need to support 2,4 GHz:n frequency** (will not work in 5 GHz frequency). WPS need to be turned off.
- 3) The Wi-Fi function doesn't support Chinese Wi-Fi network name.
- 4) Wi-Fi 4G and 5G. The devices can be connected and controlled in Wi-Fi, 4G and 5G mobile hotspot modes.
- 5) Router with WEP encryption is not supported.
- 6) Software operation interface is universal and its control functions may not be completely corresponding to the unit. Software operation interface may vary along with APP upgrading or different operation system. Please refer to the actual program.

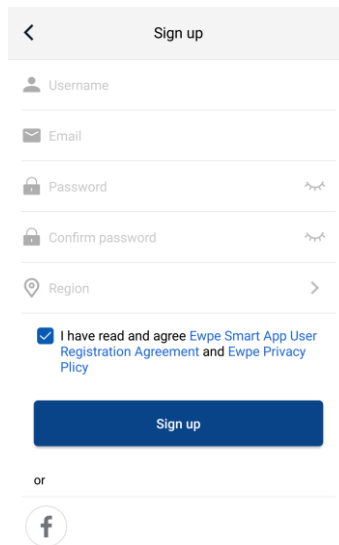
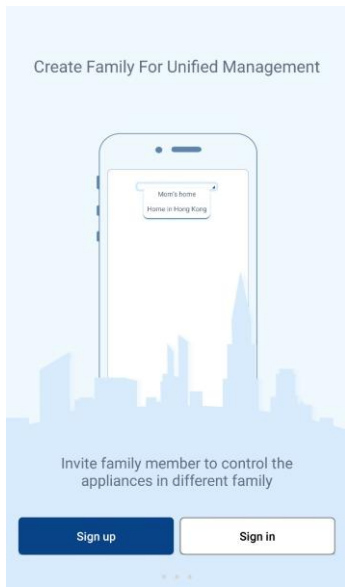
1. Ewpe SmartAPP

Scan the following QR code with your smart phone to download and install Ewpe Smart APP directly.



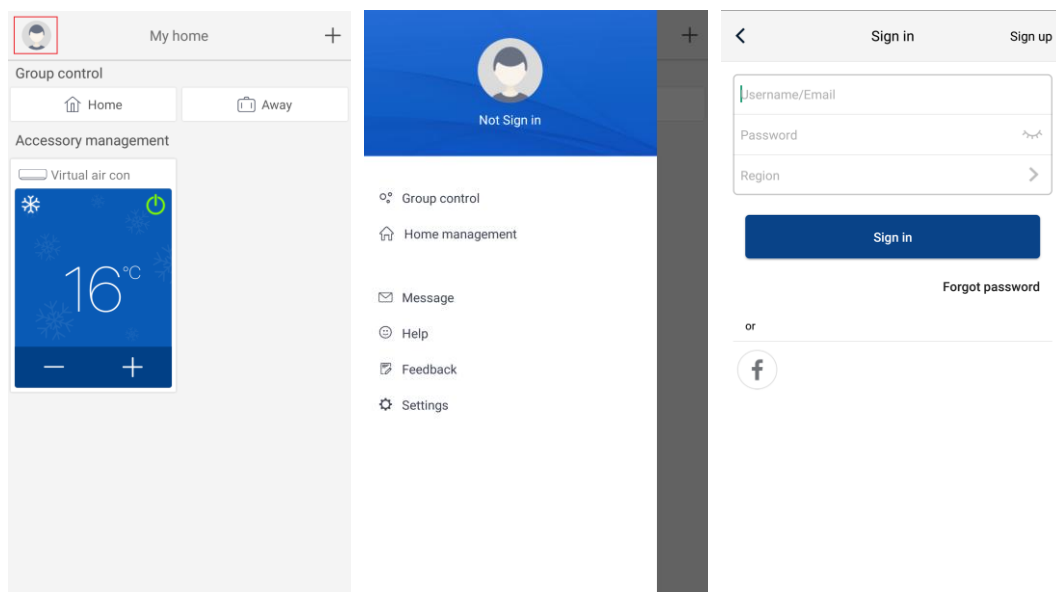
2. Registration

Open Ewpe Smart APP and click "Sign up" for registration.



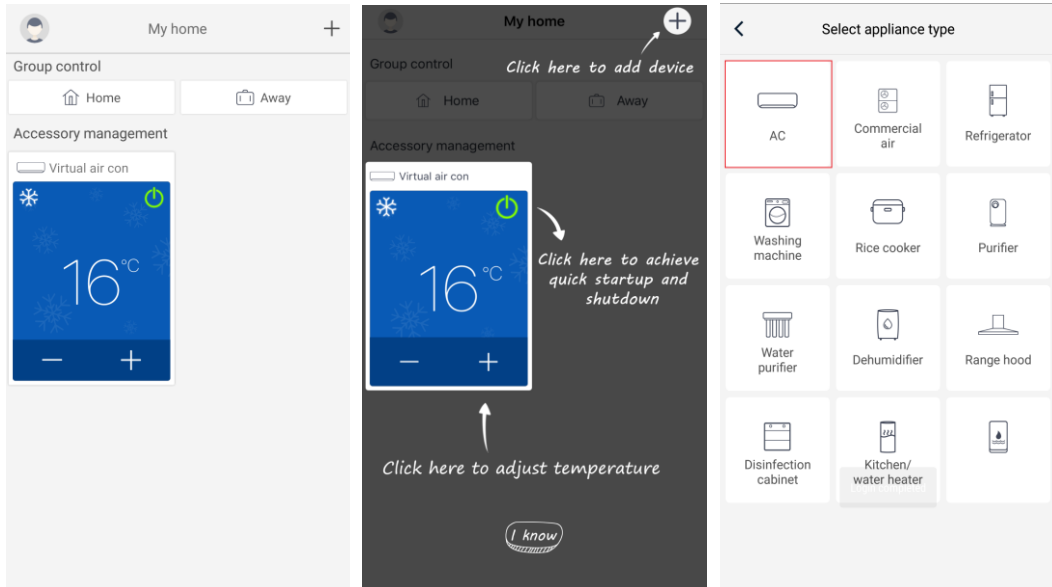
3. Sign in

Except sign in in the prompt interface, you can also enter the homepage and click the profile picture at the left upper corner to sign in.

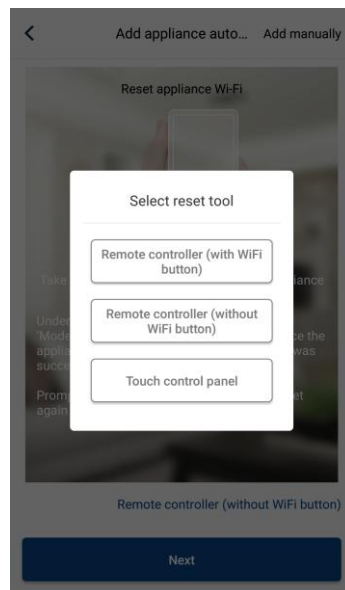


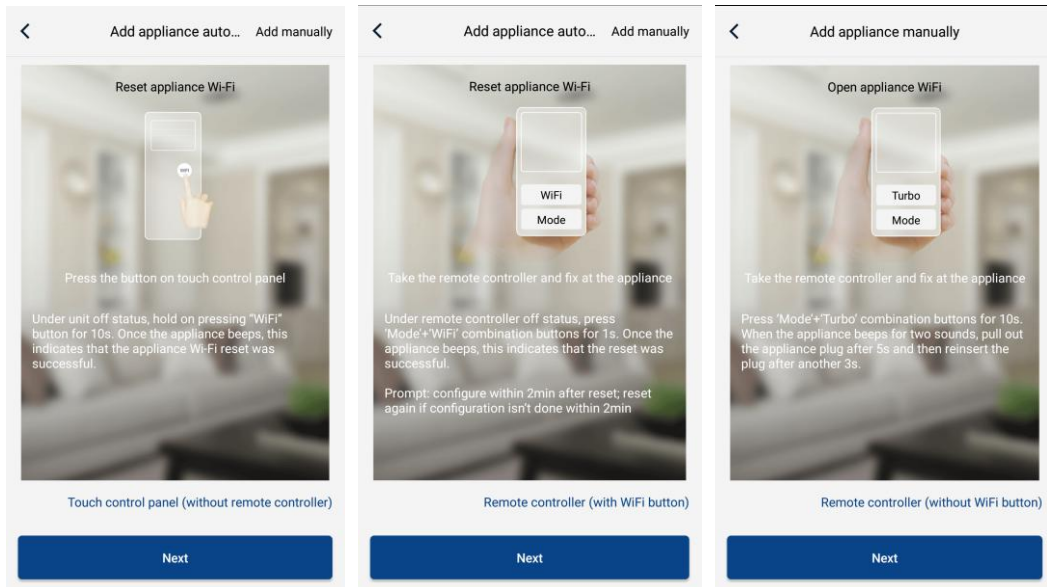
4. Add device

Click "+" at the right upper corner of homepage to add device.

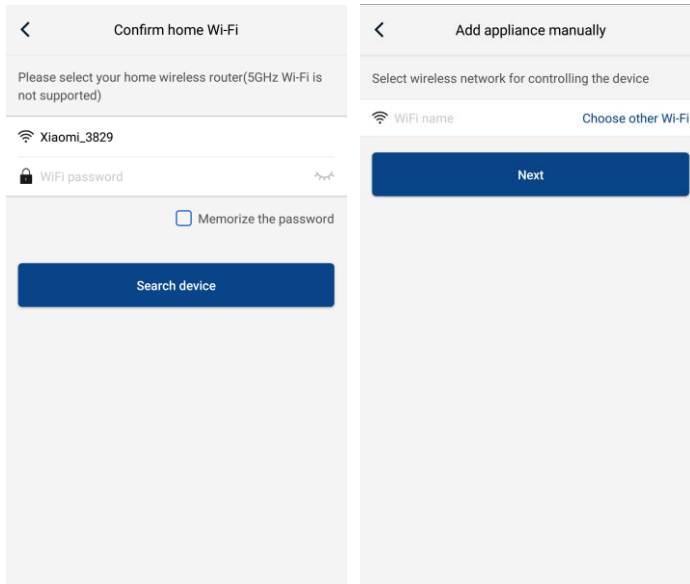


After selecting “AC”, you can select different reset tools according to actual situation. The APP interface will provide relevant operation instructions for different tools.

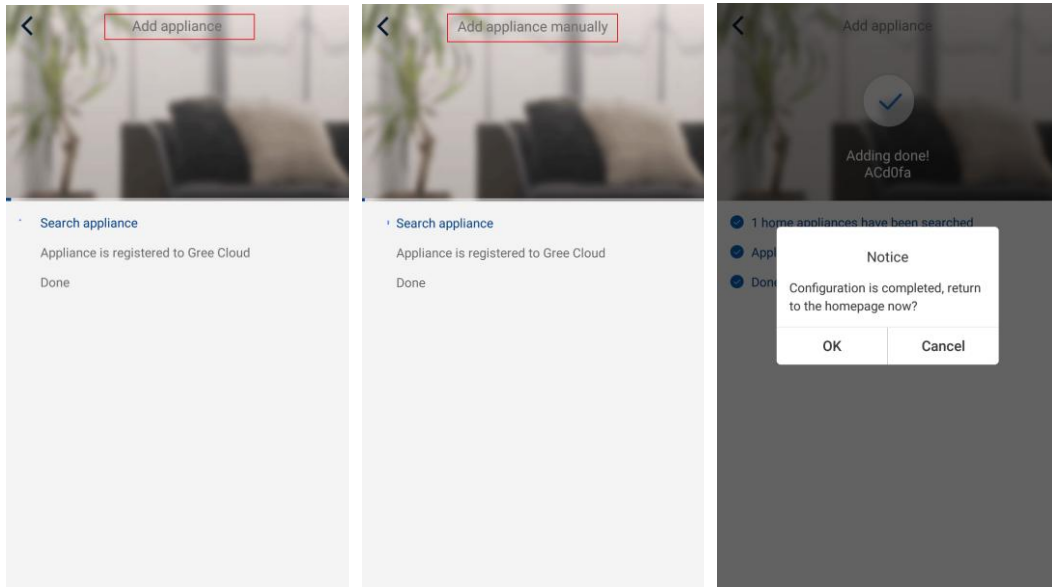




Reset the air conditioner (refer to the operation instructions in APP interface) and click "Next" to add home appliance automatically (Wi-Fi password shall be input). Or after setting and energizing the air conditioner, click "Add appliance manually" at the right upper corner to select the wireless network for controlling the device. Then confirm family Wi-Fi and arrange configuration.



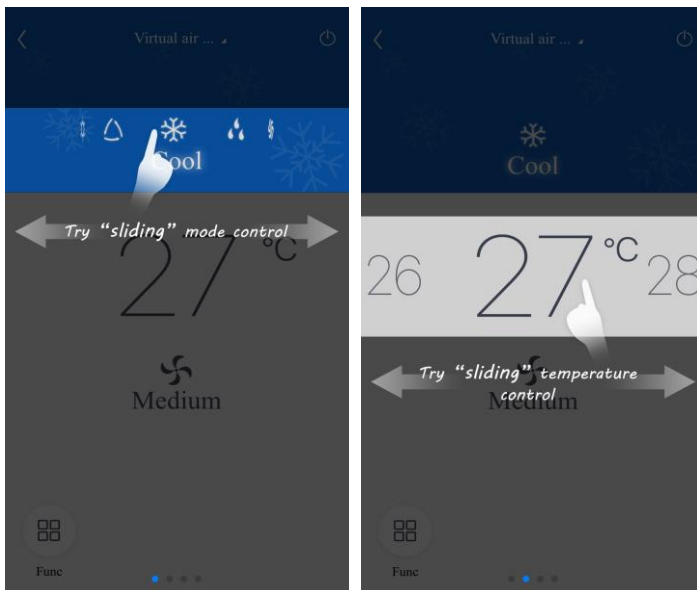
After accomplishing device reset and filling correct information, search device and arrange configuration.

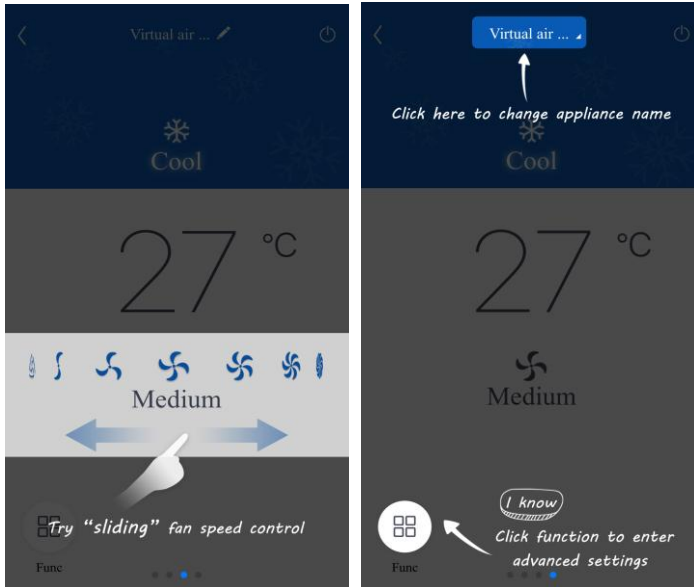


Setting of Main Functions

In homepage, click the device in device list and enter device operation interface.

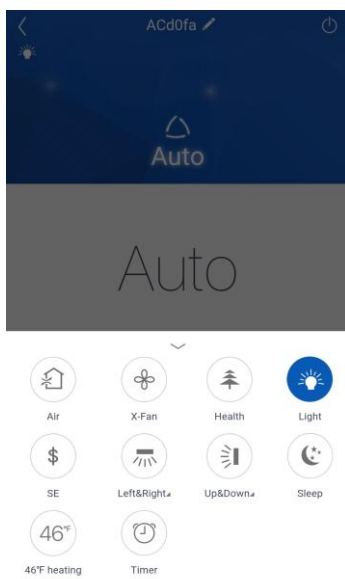
1. Set mode, temperature and fan speed





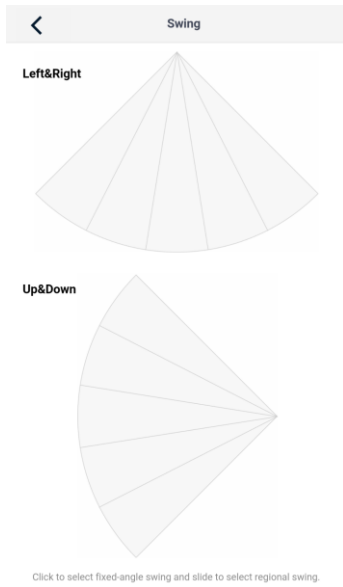
2. Set advance functions

Click Func at the left lower corner in device operation interface to enter advanced settings

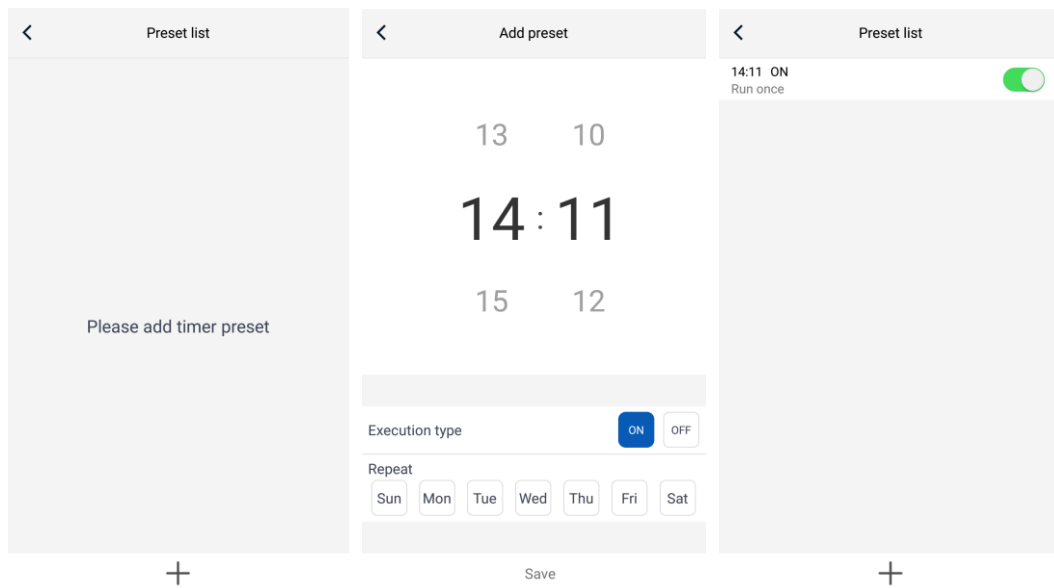


Swing setting

Click “Up&down swing” or “Left&right swing” to turn on or turn off swing function. Click the arrow at the right lower corner of icon to enter the following interface and set swing range.

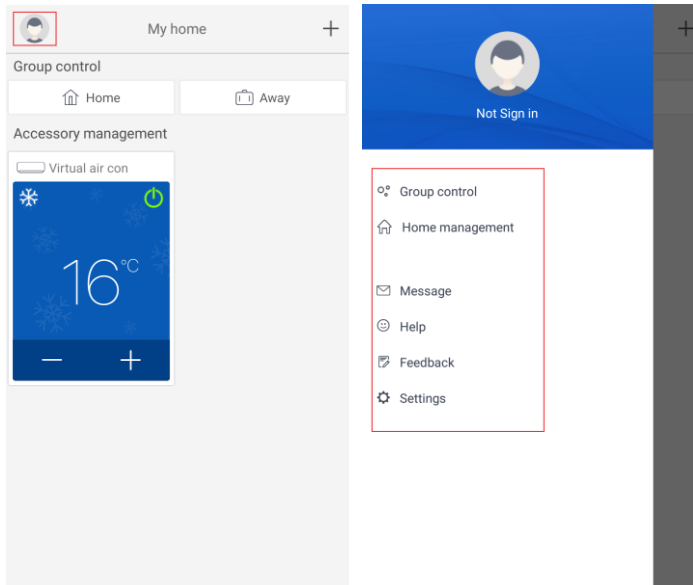


Preset setting



etting of Other Functions

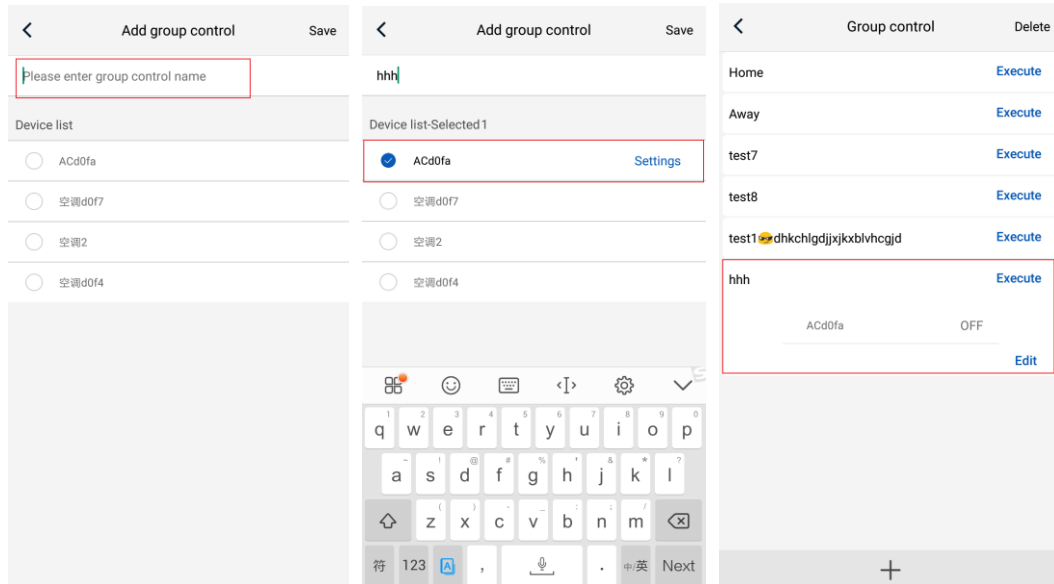
1. Menu of homepage
Click the profile picture at the left upper corner of homepage and set each function in the following menu.



2. Scene

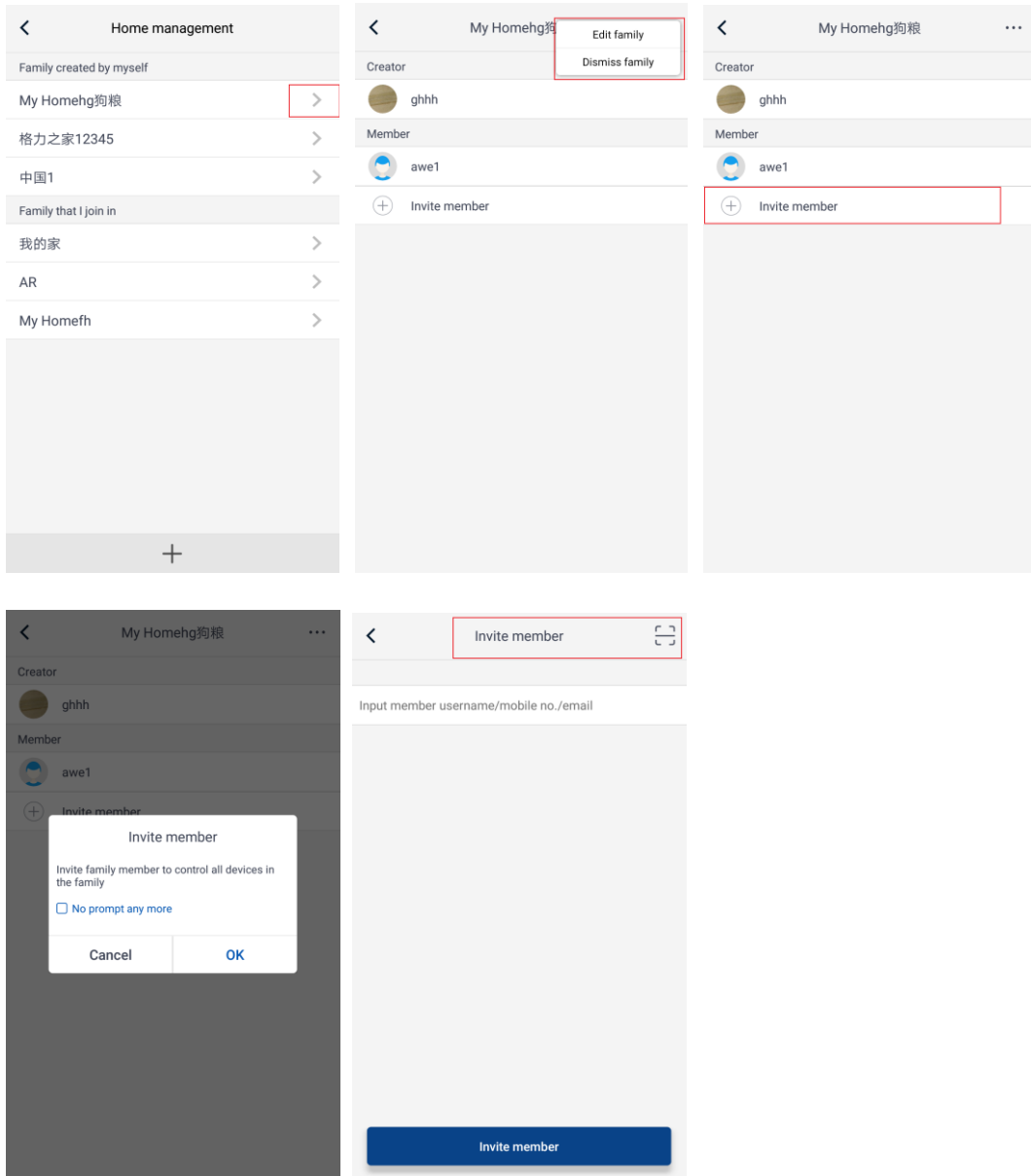
Click “Scene” and then you can operate the devices in the preset scene.

Example: Edit scene name to “hhh” and preset the devices in device list. When this scene is executed, you can execute the selected presets to the devices in the scene.



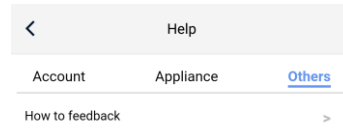
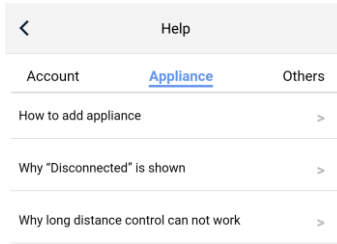
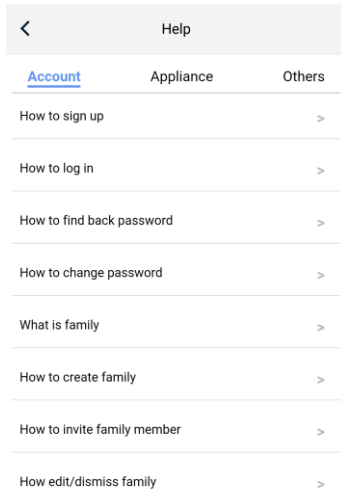
3. Home management

Click “Home management” to create or manage family. You can also add family members according to the registered account.



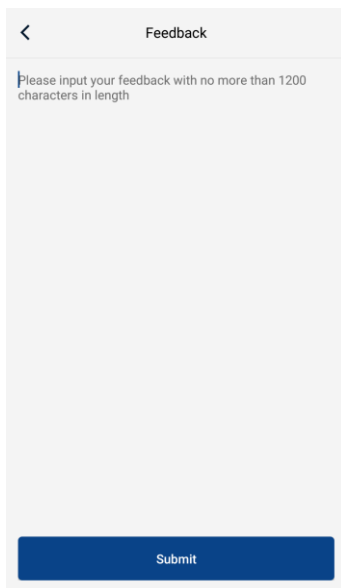
4. Help

Click "Help" and view the operation instructions of the APP.



5. Feedback

Click "Feedback" to submit feedback.



For more information wilfa.com.



AS WILFA
Industriveien 25
1481 Hagan
Norway

wilfa.com